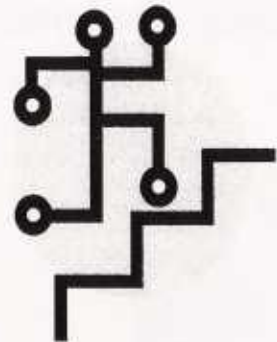


Combining Professional Development and Technology Integration - An Efficient Union

NCLB demands that teachers be both highly qualified in content and more technologically capable in the classroom. Yavapai County, through the services and expertise of its Technology Integration Specialist, can offer a wide range of training opportunities which meet the criteria of Professional Development Standards and integrate the use of technology, based on unique needs of each school or district. Training can be on-site or regional, and is free to all schools in the County.



Hit the ground running with plans for next year's professional development—reserve your program dates now!

Jane Cheek
PO Box 26326
Prescott Valley, Arizona 86312
Phone: 928-830-7699
Email: jane.cheek@co.yavapai.az.us

WHAT'S AVAILABLE?

Ready-to-implement programs like **ASSET** and **United Streaming**, **Intel** (Thinking Tools), **Teachscape** (collaboration and professional development online) and **I-Safe** (student-driven internet safety program, facilitated by teachers). These are all free to Yavapai County Schools.

Assistance can also be provided for using the **IDEAL** and **ASIP** sites, for **curriculum mapping**, setting up a **Professional Learning Team** or Community, and soon, for implementing programs like **Galileo** and **AIMSweb**. The TIS for Yavapai County is qualified to help fill your professional development needs, with and without technology, using Professional Development procedures and Standards which are compliant with NCLB.

HOW CAN I GET SOME?

Think about your needs and the time you can devote to Professional Development. Then, make a plan and set a date with the TIS.

Here are two options available to you:

1. **Group Programs** - any number of days, any number of participants, at your site. Plan for one strong workshop on one topic, or several meetings over time covering a wider range of topics.
2. **"Sub-for-a-day"** - Let the TIS be the "Sub" in a teacher-leader's classroom for a day to provide demonstrations of instructional methodologies. The teacher gets professional development time and credit, and there's no need to hire a sub.

Fill out the form to the right and send it to the address provided, or call/email. You WILL be contacted!

Yavapai County Professional Development with the Technology Integration Specialist - 2005/2006

District/School : _____

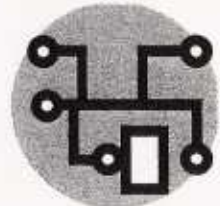
Contact Person: _____

Address: _____

Phone: _____

Email: _____

Potential Dates for PD: _____



**JANE CHEEK
YAVAPAI COUNTY
TECHNOLOGY INTEGRATION SPECIALIST**

**PO Box 26326
Prescott Valley, AZ 86312**



**JANE CHEEK
YAVAPAI COUNTY
TECHNOLOGY INTEGRATION SPECIALIST**

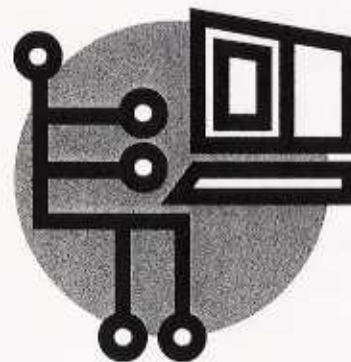
PO Box 26326
Prescott Valley, AZ 86312

Phone: 928-830-7699
Email: jane.cheek@co.yavapai.az.us

JANE CHEEK
YAVAPAI COUNTY
TECHNOLOGY INTEGRATION SPECIALIST

*Enhancing Education
(and Professional Development)
Through Technology*

**Putting It All Together:
Professional Development
and Technology Integration**



Planning PD for 2005-2006